


MAYO CLINIC



The Importance of the Basics:

My Histology Experience in Haiti

©2014 Mayo Clinic | slide 1

Objectives:


- Information about Haiti
- Obstacles in public healthcare for Haiti
- Bringing histology to Haiti
- Training process
- Training roadblocks
- Current state of operations

MAYO CLINIC

©2014 Mayo Clinic | slide 2

Haiti

- Located on the west side of Hispaniola
- Population: 10,924,000
- Average income per capita: \$1,750
- Life expectancy: 65 – women, 61 – men
- Infant mortality rate: 48.2/1000 live births
- Literacy: 65.3% (UN)



MAYO CLINIC

©2014 Mayo Clinic | slide 3

2010 Haitian Earthquake

- 3 million displaced citizens
- 230,000 dead
- 60% of the healthcare system was destroyed
- 10% of medical staff were killed or left the country
- Subsequent Cholera outbreak



©2014 Mayo Clinic | 1004

Obstacles

- Funding
 - Haitian Ministry of Health destroyed in 2010 earthquake
- Waste management
 - Most waste is burned in the streets
- Sanitation
- Electricity
- Water



©2014 Mayo Clinic | 1004

Obstacles



©2014 Mayo Clinic | 1004

Histology in Haiti

- Port Au Prince
 - Only public histology lab in the country until this year
- Private histology practice
 - Patients were responsible for facilitating histological inquiries
- Cap Haitien
 - Justinien Hospital
 - Opened 2nd public histology lab in the country in May of 2016



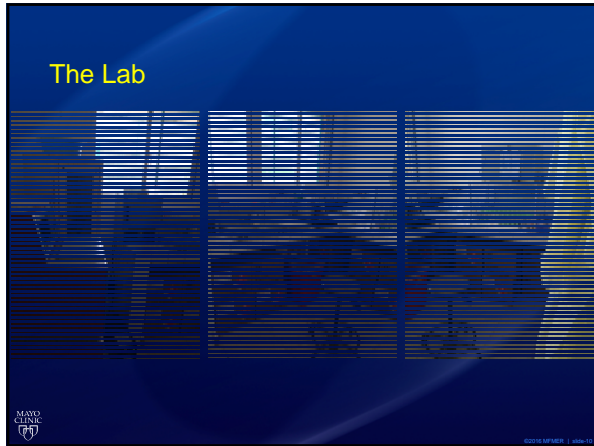
©2014 Mayo Clinic | 4/19/17



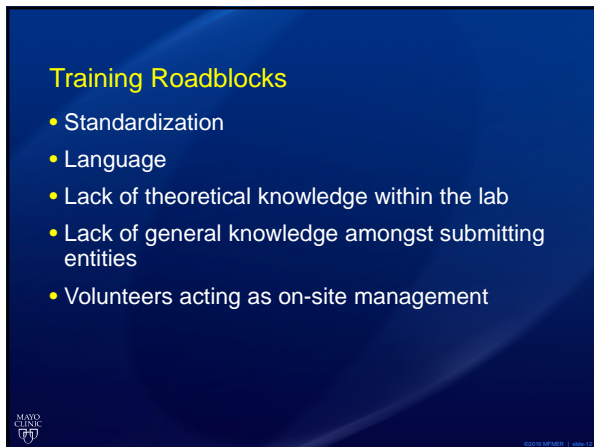
©2014 Mayo Clinic | 4/19/17



©2014 Mayo Clinic | 4/19/17









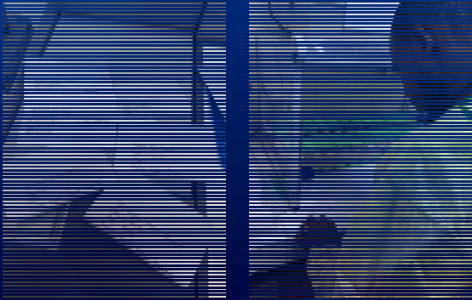
Training Roadblocks (Continued)

- No standard processes were established
 - Slides per block?
 - Sections per slide?
- No standard language was established
 - Creole
 - French
 - English



©2015 Mayo Clinic | 4/19/17


Training Roadblocks (Continued)



©2015 Mayo Clinic | 4/19/17

Training Roadblocks (Continued)


- Fixation
 - Prevent putrefaction and autolysis
 - Maintain relationship between cellular components
 - 20:1 fixative to tissue



©2015 Mayo Clinic | 4/19/17

Training Roadblocks (Continued)

- Processing—Critical Step
 - Provides support for cellular structures during microtomy
 - Dehydration
 - Clearing
 - Infiltration



MAYO CLINIC

State as of December

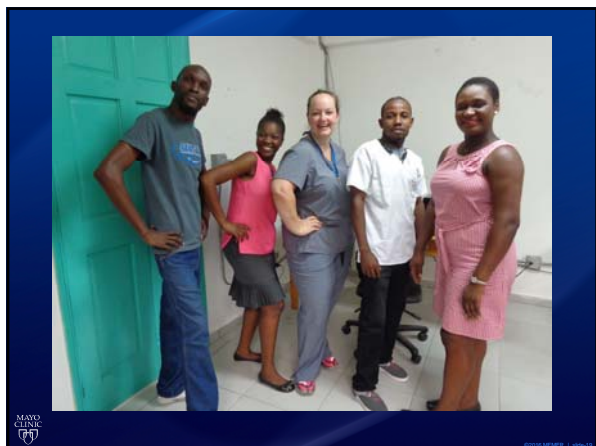
- 93 total specimens have been received
- H&E efficiency and competency has improved significantly
- Functioning laboratory with approximately a one week turnaround between tissue receipt and uploaded image
- Image upload for diagnosis is caught up
- Troubleshooting amongst techs continues to be a challenge

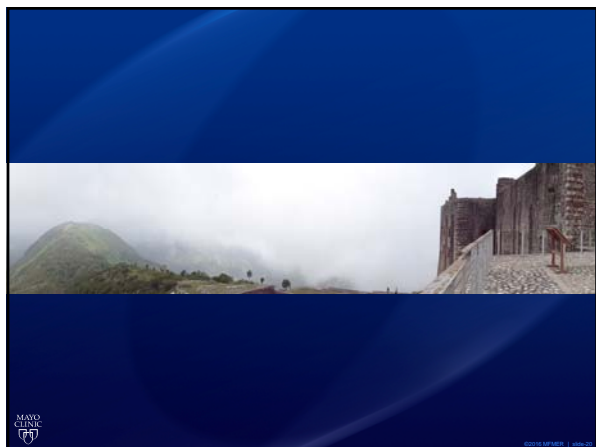
MAYO CLINIC

Conclusion

Sometimes it seems like we don't use the information that we learn in school. This trip showed me, and I hope that this presentation has conveyed to you, the importance of understanding the basics from the beginning. While it may seem like we don't use the information, it is always there guiding our troubleshooting abilities from day to day

MAYO CLINIC












Questions?

- Thank you!



Citations

- 2016 Hurricane Mathew. (2016). Retrieved December 12, 2016, from <https://www.cdc.gov/globalhealth/countries/haiti/>
- Health Care Underprioritized in Haiti Reconstruction. (2015, January 08). Retrieved December 12, 2016, from <http://www.doctorswithoutborders.org/article/health-care-underprioritized-haiti-reconstruction>
- Facts About Haiti - Sionfonds for Haiti. (2016). Retrieved December 12, 2016, from <http://sionfondsforhaiti.org/facts-about-haiti/>



©2016 Mayo Clinic
